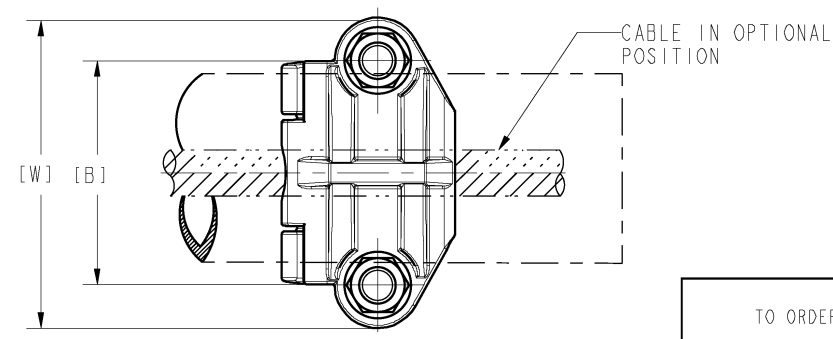
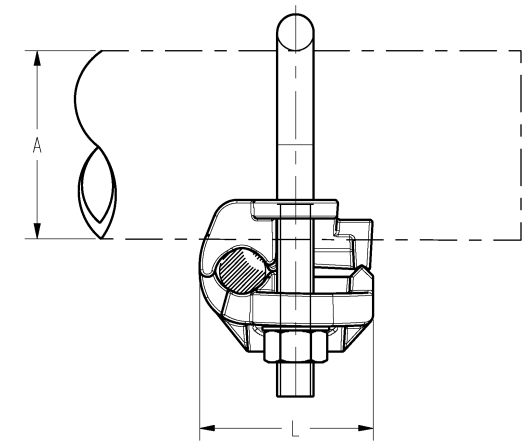
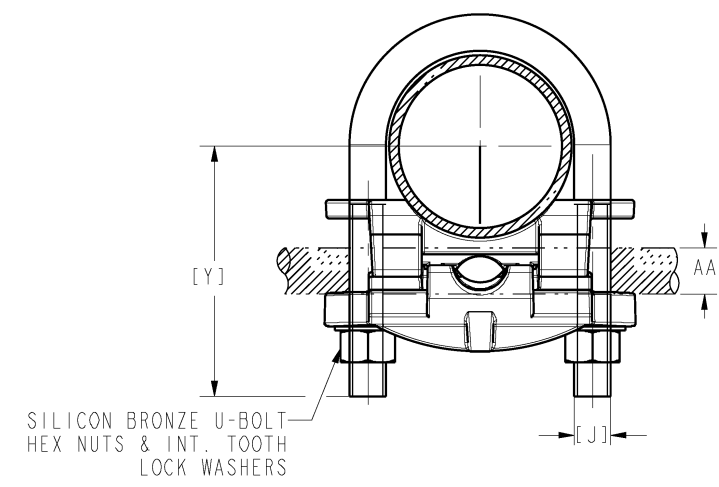


CATALOG NUMBER	A						AA								B		Y		J		L		W		"U" BOLT	TORQUE		
	ROD ACCOMMODATED			I.P.S. PIPE ACCOMMODATED			COPPER CONDUCTOR ACCOMMODATED								(in)	(mm)	(in)	(mm)	(in)	(mm)	(in)	(mm)	(in)	(mm)		Lb	in	Nm
	NOMINAL DIAMETER (in)	ACTUAL DIAMETER		NOMINAL DIAMETER (in)	ACTUAL DIAMETER		AWG				METRIC WIRE SIZE																	
		(in)	(mm)		(in)	(mm)	MIN	MAX	MIN	MAX	MIN	MAX	MIN	MAX														
GAR1926	2.500-2.88	2.500-2.88	[64]-[73]	2 1/2	2.875	[73]	4 sol	0.204	2/0 str	0.419	25mm ² str	[6.5]	70mm ² str	[10.9]	3.31	[84]	3.19	[81]	3/8	[10]	1.56	[40]	4.19	[106]	266	240	27.0	
GAR1929	2.500-2.88	2.500-2.88	[64]-[73]	2 1/2	2.875	[73]	2/0 sol	0.365	250 Kcmil	0.575	70mm ² str	[10.9]	120mm ² str	[14.4]	3.31	[84]	3.19	[81]	3/8	[10]	1.81	[46]	4.19	[106]	266	240	27.0	
GAR1934	2.500-2.88	2.500-2.88	[64]-[73]	2 1/2	2.875	[73]	300 Kcmil	0.63	500 Kcmil	0.813	150mm ² str	[16.0]	240mm ² str	[20.3]	3.44	[87]	3.88	[98]	1/2	[13]	2.38	[60]	4.36	[111]	347	480	54.1	
GAR204C	3.000-3.50	3.000-3.50	[76]-[89]	3	3.500	[89]	8 sol	0.128	4 str	0.232	10mm ² sol	[3.6]	16mm ² str	[5.1]	3.94	[100]	3.44	[87]	3/8	[10]	1.31	[33]	4.81	[122]	267	240	27.0	
GAR2026	3.000-3.50	3.000-3.50	[76]-[89]	3	3.500	[89]	4 sol	0.204	2/0 str	0.419	25mm ² str	[6.5]	70mm ² str	[10.9]	3.94	[100]	3.44	[87]	3/8	[10]	1.56	[40]	4.81	[122]	267	240	27.0	
GAR2029	3.000-3.50	3.000-3.50	[76]-[89]	3	3.500	[89]	2/0 sol	0.365	250 Kcmil	0.575	70mm ² str	[10.9]	120mm ² str	[14.4]	3.94	[100]	3.44	[87]	3/8	[10]	1.81	[46]	4.81	[122]	267	240	27.0	
GAR2034	3.000-3.50	3.000-3.50	[76]-[89]	3	3.500	[89]	300 Kcmil	0.63	500 Kcmil	0.813	150mm ² str	[16.0]	240mm ² str	[20.3]	4.12	[105]	4.06	[103]	1/2	[13]	2.38	[60]	5.19	[132]	282	480	54.1	
GAR2039	3.000-3.50	3.000-3.50	[76]-[89]	3	3.500	[89]	550 Kcmil	0.85	750 Kcmil	0.998	300mm ² str	[22.6]	300mm ² str	[22.6]	4.19	[106]	4.44	[113]	5/8	[16]	2.75	[70]	5.56	[141]	450	660	74.4	
GAR214C	3.500-4.00	3.500-4.00	[89]-[102]	3 1/2	4.000	[102]	8 sol	0.128	4 str	0.232	10mm ² sol	[3.6]	16mm ² str	[5.1]	4.44	[113]	3.81	[97]	3/8	[10]	1.31	[33]	5.31	[135]	264	240	27.0	
GAR2126	3.500-4.00	3.500-4.00	[89]-[102]	3 1/2	4.000	[102]	4 sol	0.204	2/0 str	0.419	25mm ² str	[6.5]	70mm ² str	[10.9]	4.44	[113]	3.81	[97]	3/8	[10]	1.56	[40]	5.31	[135]	264	240	27.0	
GAR2129	3.500-4.00	3.500-4.00	[89]-[102]	3 1/2	4.000	[102]	2/0 sol	0.365	250 Kcmil	0.575	70mm ² str	[10.9]	120mm ² str	[14.4]	4.44	[113]	3.81	[97]	3/8	[10]	1.81	[46]	5.31	[135]	264	240	27.0	
GAR2134	3.500-4.00	3.500-4.00	[89]-[102]	3 1/2	4.000	[102]	300 Kcmil	0.63	500 Kcmil	0.813	150mm ² str	[16.0]	240mm ² str	[20.3]	4.56	[116]	4.19	[106]	1/2	[13]	2.38	[60]	5.69	[145]	436	480	54.1	
GAR224C	4.000-4.50	4.000-4.50	[102]-[114]	4	4.500	[114]	8 sol	0.128	4 str	0.232	10mm ² sol	[3.6]	16mm ² str	[5.1]	4.94	[126]	3.75	[95]	3/8	[10]	1.31	[33]	5.81	[148]	261	240	27.0	
GAR2226	4.000-4.50	4.000-4.50	[102]-[114]	4	4.500	[114]	4 sol	0.204	2/0 str	0.419	25mm ² str	[6.5]	70mm ² str	[10.9]	4.94	[126]	3.75	[95]	3/8	[10]	1.56	[40]	5.81	[148]	261	240	27.0	
GAR2229	4.000-4.50	4.000-4.50	[102]-[114]	4	4.500	[114]	2/0 sol	0.365	250 Kcmil	0.575	70mm ² str	[10.9]	120mm ² str	[14.4]	4.94	[126]	3.75	[95]	3/8	[10]	1.81	[46]	5.81	[148]	261	240	27.0	
GAR2234	4.000-4.50	4.000-4.50	[102]-[114]	4	4.500	[114]	300 Kcmil	0.63	500 Kcmil	0.813	150mm ² str	[16.0]	240mm ² str	[20.3]	5.06	[129]	4.06	[103]	1/2	[13]	2.38	[60]	6.19	[157]	416	480	54.1	
GAR2426	--	--	--	5	5.563	[141]	4 sol	0.204	2/0 str	0.419	25mm ² str	[6.5]	70mm ² str	[10.9]	6.00	[152]	4.06	[103]	3/8	[10]	1.56	[40]	6.88	[175]	422	240	27.0	
GAR2429	--	--	--	5	5.563	[141]	2/0 sol	0.365	250 Kcmil	0.575	70mm ² str	[10.9]	120mm ² str	[14.4]	6.00	[152]	4.44	[113]	3/8	[10]	1.81	[46]	6.88	[175]	422	240	27.0	
GAR2434	--	--	--	5	5.563	[141]	300 Kcmil	0.63	500 Kcmil	0.813	150mm ² str	[16.0]	240mm ² str	[20.3]	6.12	[156]	4.69	[119]	1/2	[13]	2.38	[60]	7.25	[184]	437	480	54.1	
GAR6439	0.625-0.75	0.625-0.75	[16]-[19]	3/8	0.675	[17]	550 Kcmil	0.85	750 Kcmil	0.998	300mm ² str	[22.6]	300mm ² str	[22.6]	1.62	[41]	2.69	[68]	1/2	[13]	2.55	[65]	2.75	[70]	247	480	54.1	
GAR244C	-	-	-	5	5.563	[141]	8 sol	0.128	4 str	0.232	10mm ² str	[3.6]	16mm ² sol	[5.1]	1.62	[41]	4.06	[103]	3/8	[10]	1.56	[40]	6.88	[175]	122	240	27.0	



- NOTES:
- MATERIAL: CAST COPPER ALLOY.
 - FINISH: BRIGHT DIPPED.
 - UL 467 LISTED FILE NO. E9999, ACCEPTABLE FOR DIRECT BURIAL IN EARTH AND CONCRETE CSA 22.2 NO 65 LISTED. FILE NO. 42862..
 - DIMENSIONS IN BRACKETS [] ARE IN MILLIMETERS, ROUNDED OFF TO THE NEAREST MILLIMETER, UNLESS OTHERWISE NOTED, AND ARE FOR REFERENCE ONLY.
 - ADD SUFFIX "TN" TO THESE CATALOG NUMBERS FOR TIN-PLATED VERSIONS. (HARDWARE NOT TIN PLATED).
 - ADD SUFFIX "W" TO THESE CATALOG NUMBERS FOR TIN PLATED BODIES AND HARDWARE. HARDWARE TO BE ELECTRO-TIN PLATED.
 - SUFFIX "SE" TO THE CATALOG NUMBER INDICATES, IT COMES WITH SPLIT LOCK WASHER INSTEAD OF THE STANDARD INTERNAL TOOTH LOCK WASHER.

TO ORDER BURNDY® PRODUCTS CALL
 UNITED STATES
 1-800-346-4175 (LONDONDERRY, NH)

CANADA:
 1-800-361-6975 (QUEBEC)
 1-800-387-6487 (ALL OTHER PROVINCES)

FOR PRODUCT INFO: <http://www.burndy.com>

GROUND CLAMP - CABLE TO REBAR	
ITEM NO:	N/A
CAT. NO:	GAR-- (TABLE)
DRAWN BY:	B.K. 01/21/09
CHECKER:	G.H.G. 01/21/09
DSN APPVL:	T REYNOLDS 10/18/12
MFG APPVL:	--
QA APPVL:	J HILLMAN 10/22/12
MKT APPVL:	P THERRIEN 10/19/12
PROD FAM:	MECHANICAL GROUNDING
PROJECT #:	--
DOCUMENT TYPE:	Sales
REL LEVEL:	Released

BURNDY

SCALE: 1:1
 DRAWING NO: SD015789
 SHEET 2 OF 4